

## Antenna Mast AM 4.0-0

### Technical data:

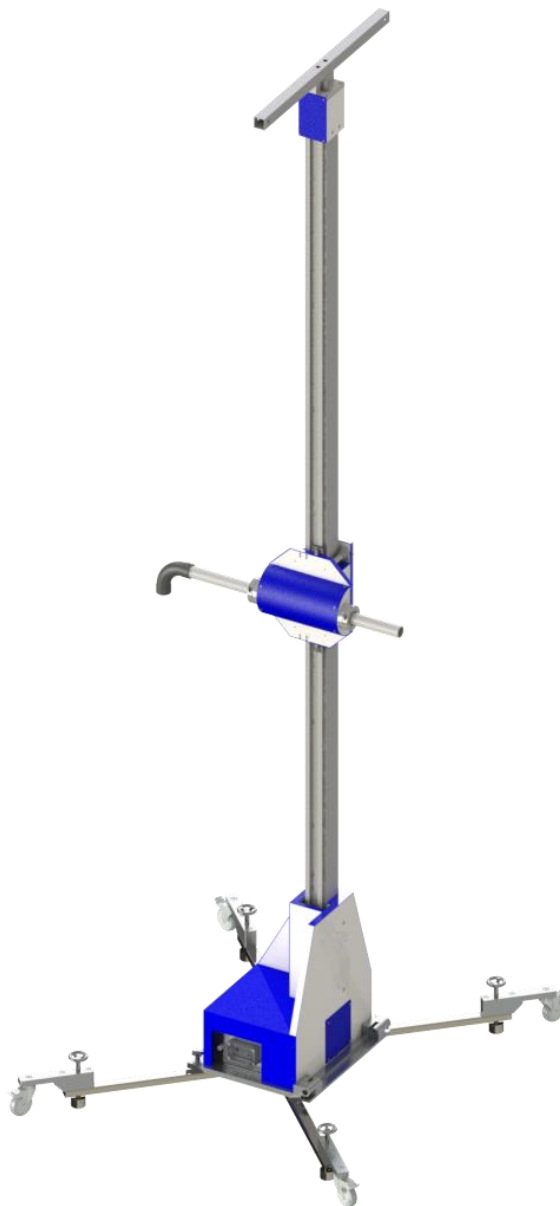
|                                                                                                                                             |                                                    |
|---------------------------------------------------------------------------------------------------------------------------------------------|----------------------------------------------------|
| Antenna height automatic adjustable                                                                                                         | 1.0 m – 4.0 m                                      |
| Total mast height                                                                                                                           | 4.6 m                                              |
| Load capability                                                                                                                             | max. 10 kg (when balanced)                         |
| For long and heavy antennas, a counter weight is required to balancing the load.<br>Depending on the distance of the antenna gravity center |                                                    |
| Material of antenna mast                                                                                                                    | Plastic and reinforced fiberglass                  |
| Mast cross section                                                                                                                          | 101 mm x 95 mm                                     |
| Base L x W                                                                                                                                  | 1.3 m x 0.7 m                                      |
| Position speed adjustable                                                                                                                   |                                                    |
| in combination with FCU3.0                                                                                                                  | 1.0 cm/s – 35 cm/s                                 |
| in combination with NCD                                                                                                                     | 1.0 cm/s – 20 cm/s                                 |
| Position accuracy                                                                                                                           | +/- 0.5 cm                                         |
| Electric polarization                                                                                                                       | 0° / 90° (vert. / hor.)                            |
| Polarization time                                                                                                                           | approx. 3 s                                        |
| Motor                                                                                                                                       | DC stepper Motor                                   |
| Antenna support drive                                                                                                                       | 2 toothed belts                                    |
| Material of toothed belts                                                                                                                   | Kevlar reinforced (non-metallic)                   |
| Voltage                                                                                                                                     | 110 VAC – 230 VAC, 50 Hz / 60 Hz<br>single phase   |
| Current consumption                                                                                                                         | max. 16 A                                          |
| Required RCD                                                                                                                                | 300 mA                                             |
| Control cable                                                                                                                               | Fiber optic lines                                  |
| Remote control via                                                                                                                          | LAN (TCP/IP); (IEEE only with NCD)                 |
| Interference suppression                                                                                                                    | 20 dB under limits DIN EN 55011:2018-05<br>class B |
| Operating temperature                                                                                                                       | -10° C – 35 ° C                                    |
| Total weight                                                                                                                                | approx. 100 kg                                     |
| Accessories                                                                                                                                 | Service manual<br>3 m power supply cable           |

### Brief description

The Antenna Mast **AM 4.0-O** is designed for use in open area test sites. Included guy wires, anchoring pins and protection cover ensure an operation for wind speeds up to 60 km/h. The antenna mast, with the exception of the drive unit, is fabricated from plastic (PVC and reinforced fibreglass). Metal parts are located only in the base plate and the drive mechanism (max. 0.3 m above ground level).

Antenna Adapters for all commercially available antennas are available upon request. All antennas during polarization rotate around their axis to eliminate any elevation errors.

The **LAN (TCP/IP) - interface** provides an additional control option for all functions, when operated with the FCU<sup>3.0</sup> or NCD Controller.



Information presented enclosed is subject to change as product enhancements are made regularly. Pictures included are for illustration purposes only and do not represent all possible configurations.